

WET ALARM VALVES



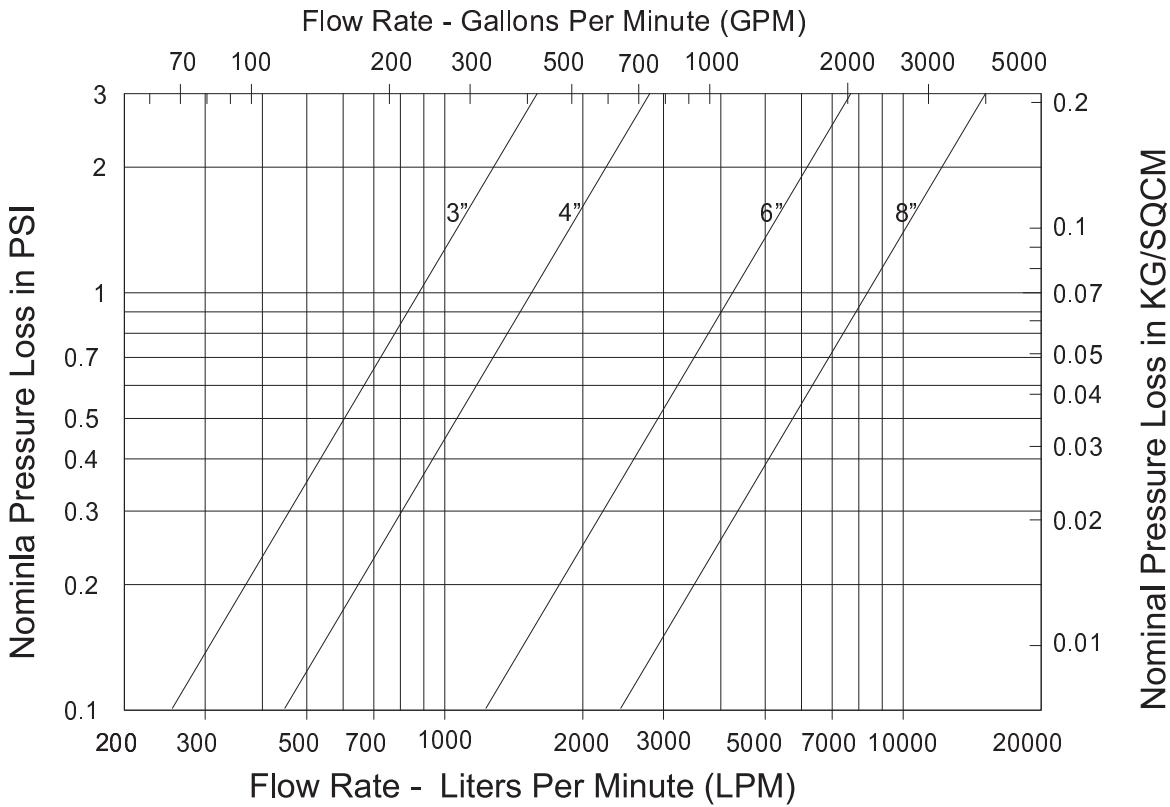
Size : 3", 4", 6" & 8"
Max. Working Pressure : 17.5 bar (250 PSI)*
Mounting : Vertical
Flange Connection : ANSI B16.42 #150
Trim : Galvanised
Coating : Red Paint
Factory Hydrostatic Test Pressure : 35 bar (500PSI)

End Connection : Flange X Flange
 Flange X Groove
 Groove X Groove

*For 8", UL 17,2 bar (250 Psi), FM 13,8 bar (200 Psi)

WET ALARM VALVES

Nominal Pressure Loss vs Flow - Alarm Valve AIAV



Weight (Kg)

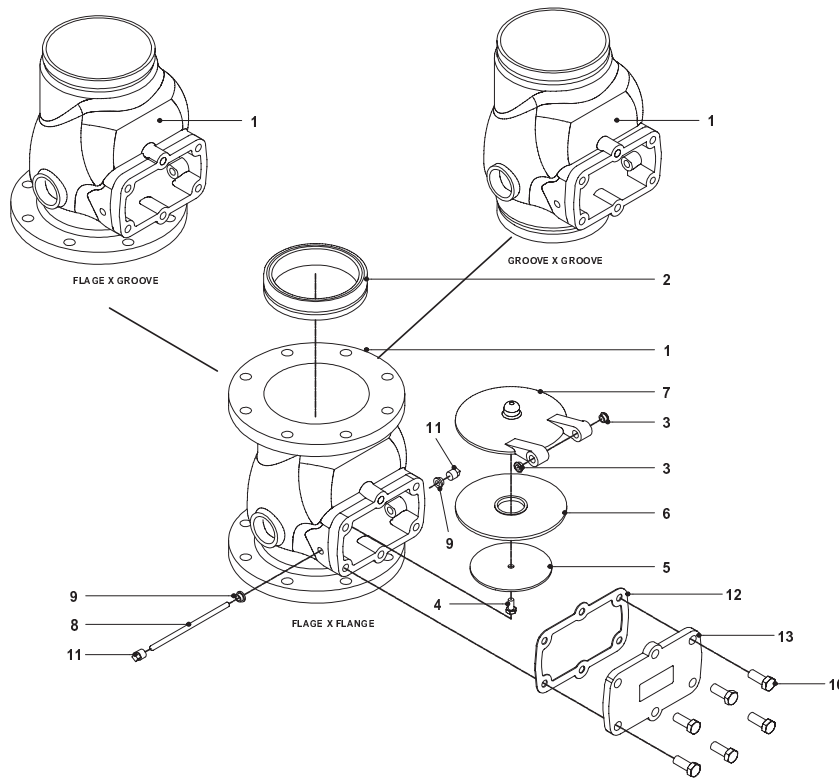
VALVE SIZE	FLANGE X FLANGE	FLANGE X GROOVE	GROOVE X GROOVE
3"	18	15	12,1
4"	27	22,1	17,3
6"	42	35,8	28
8"	65	54	44

Groove Pipe Size

SIZE	PIPE OD (mm)
3"	89
4"	114,3
6"	165,1
6"	168,3
8"	219,1

WET ALARM VALVES

Alarm Valve AIAV



ITEM	DESCRIPTION	MATERIAL SPECIFICATION	SIZE			
			3"	4"	6"	8"
1	HOUSING (FLANGE X FLANGE)	DUCTILE IRON	1	1	1	1
1	HOUSING (FLANGE X GROOVE)	DUCTILE IRON	1	1	1	1
1	HOUSING (GROOVE X GROOVE)	DUCTILE IRON	1	1	1	1
2	SEAT	BRONZE	1	1	1	1
3	CLAPPER BUSH	BRASS	2	2	2	2
4	HEX. HEAD BOLT	STAINLESS STEEL	1	1	1	4
5	RUBBER CLAMP	STAINLESS STEEL	1	1	1	1
6	RUBBER SEAT	NEOPRENE RUBBER	1	1	1	1
7	CLAPPER	DUCTILE IRON	1	1	1	1
8	HINGE PIN	STAINLESS STEEL	1	1	1	1
9	BODY BUSH	BRASS	2	2	2	2
10	HEX. HEAD BOLT	STEEL	4	4	6	6
11	SQ. HEAD PLUG	FORGED STEEL	2	2	2	2
12	COVER GASKET	NEOPRENE RUBBER	1	1	1	1
13	COVER	DUCTILE IRON	1	1	1	1



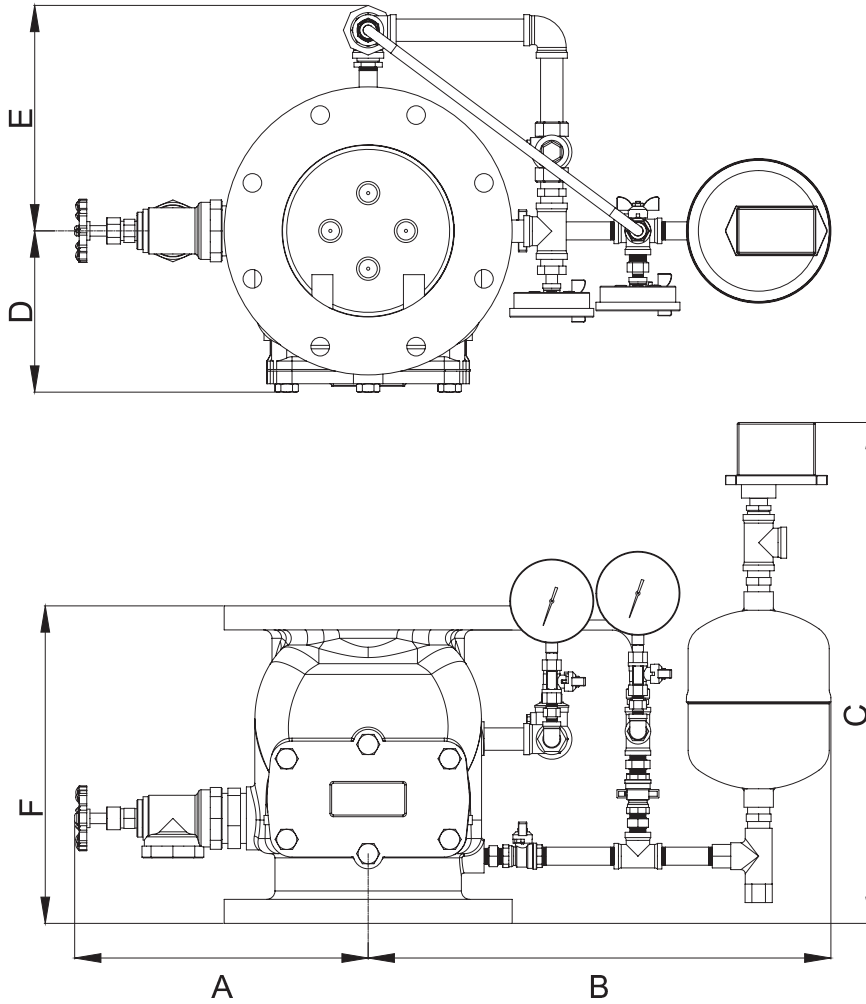
WET ALARM VALVES

Assemblies with FM Trim

ITEM NO.	DESCRIPTION	SIZE	QUANTITY PER ALARM VALVE SIZE			
			8"	6"	4"	3"
1	HEX NIPPLE	3/4"	4	4	5	2
2	TEE	3/4"	3	3	3	2
3	ELBOW	3/4"	2	2	2	-
3	ELBOW	1/2"	-	-	-	2
4	PIPE NIPPLE	3/4" X 150 MM LONG	1	-	-	-
4	PIPE NIPPLE	3/4" X 130 MM LONG	-	1	-	-
4	PIPE NIPPLE	3/4" X 100 MM LONG	-	-	1	-
4	PIPE NIPPLE	1/2" X 100 MM LONG	-	-	-	1
5	PIPE NIPPLE	3/4" X 100 MM LONG	1	-	-	-
5	PIPE NIPPLE	3/4" X 80 MM LONG	-	1	-	-
6	PIPE NIPPLE	1/2" X 100 MM LONG	1	-	-	1
6	PIPE NIPPLE	1/2" X 80 MM LONG	-	1	1	-
7	UNION	3/4"	1	1	1	-
7	UNION	1/2"	-	-	-	1
8	SWING CHECK VALVE	3/4"	1	1	1	-
8	SWING CHECK VALVE	1/2"	-	-	-	1
9	PIPE NIPPLE	3/4" X 70MM LONG	1	1	-	-
9	PIPE NIPPLE	3/4" X 60MM LONG	-	-	1	-
9	PIPE NIPPLE	1/2" X 70MM LONG	-	-	-	1
10	BALL VALVE	1/2"	2	2	2	2
11	REDUCING HEX NIPPLE	3/4" X 1/2"	-	-	-	1
12	REDUCING HEX NIPPLE	3/4" X 1/4"	1	1	1	1
13	REDUCING HEX NIPPLE	1/2" X 1/4"	1	1	1	1
14	BALL VALVE	1/4"	2	2	2	2
15	HEX NIPPLE	1/4"	2	2	2	2
16	ELBOW	1/4"	2	2	2	2
17	PRESSURE GUAGE	1/4"	2	2	2	2
18	ALARM TEST LINE ASSEMBLY	1/2"	-	-	-	1
18	ALARM TEST LINE ASSEMBLY	1/2"	-	-	1	-
18	ALARM TEST LINE ASSEMBLY	1/2"	-	1	-	-
18	ALARM TEST LINE ASSEMBLY	1/2"	1	-	-	-
19	REDUCING BUSH	3/4" X 1/2"	2	2	2	1
20	RESTRICTION NOZZLE ASSEMBLY	'AYVAZ' MAKE	1	1	1	1
21	'Y' TYPE STRAINER	3/4"	1	1	1	1
22	PLUG	1/2"	1	1	1	1
23	SPRINKLER ALARM	'AYVAZ' MAKE TYPE 'A'	1	1	1	1
23	SPRINKLER ALARM	'AYVAZ' MAKE TYPE 'B'	1	1	1	1
24	HEX NIPPLE	2"	1	1	1	-
24	HEX NIPPLE	1-1/4"	-	-	-	1
25	ANGLE VALVE	2"	1	1	1	-
25	ANGLE VALVE	1-1/4"	-	-	-	1
26	PIPE NIPPLE	1/2" X 60MM LONG	2	2	2	2
27	PIPE NIPPLE	3/4" X 80MM LONG	1	1	1	1
28	HEX NIPPLE	1/2"	3	3	3	5
29	TEE	1/2"	2	2	2	3
30	PRESSURE SWITCH (OPTIONAL)	1/2" END CONNECTION	1	1	1	1
31	RETARD CHAMBER, MODEL - RC9	'AYVAZ' MAKE	1	1	1	1
32	HEX NIPPLE	3/4"	1	1	1	1

WET ALARM VALVES

Flange X Flange

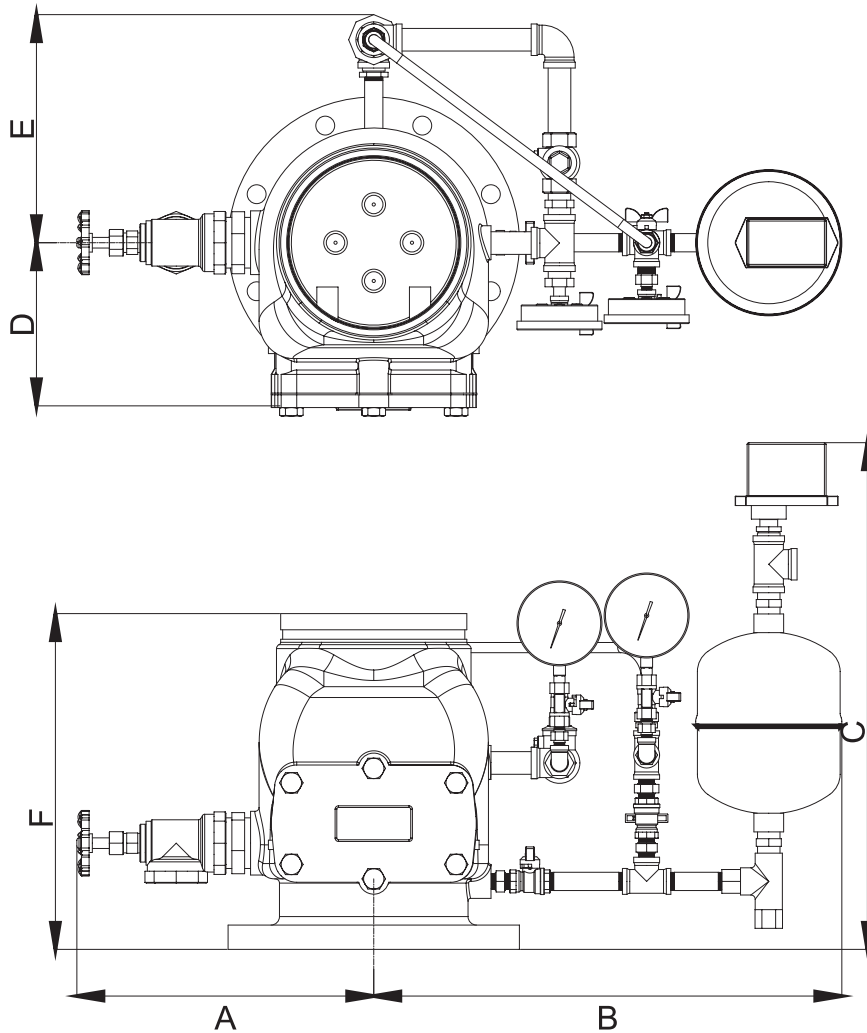


SIZE	3"	4"	6"	8"
A	279	312	331	350
B	482	488	510	551
C	588	588	588	597
D	127	140	173	192
E	201	219	234	269
F	262	274	315	378

DIMENSIONS are approx. and in millimeters.

WET ALARM VALVES

Flange X Groove

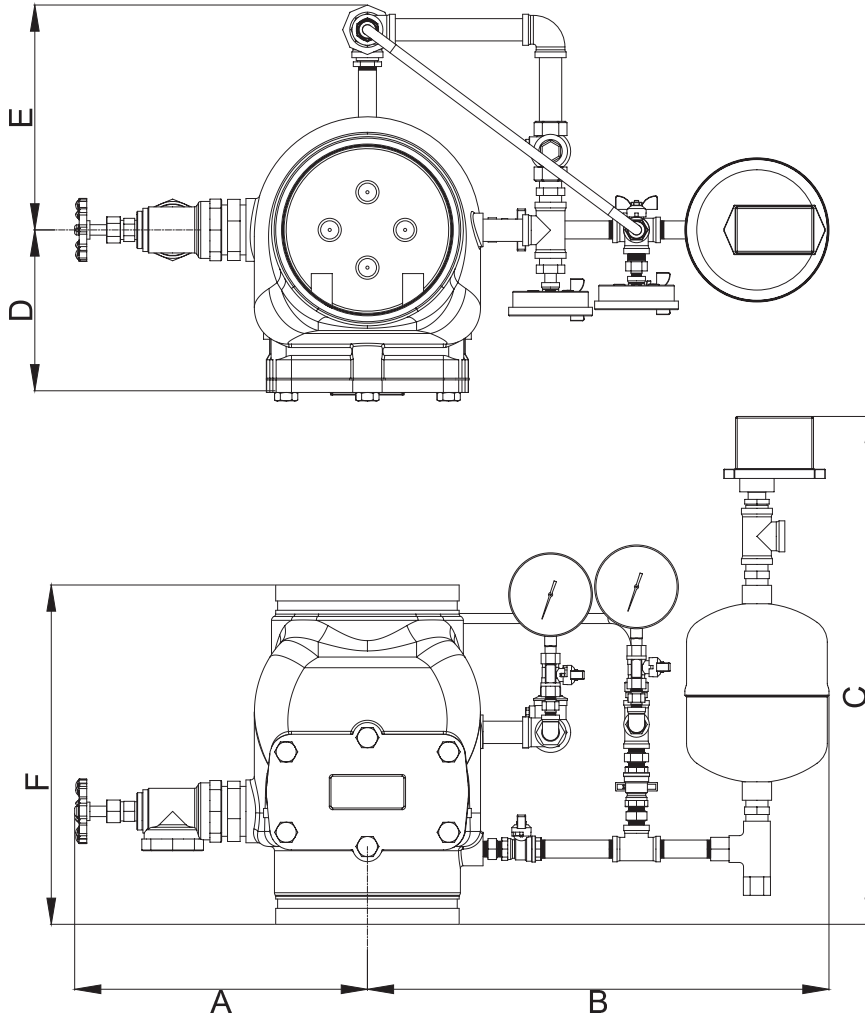


SIZE	3"	4"	6"	8"
A	279	312	331	350
B	482	488	510	551
C	588	588	588	597
D	127	140	173	204
E	201	219	234	269
F	275	291.3	316.8	395.2

DIMENSIONS are approx. and in millimeters.

WET ALARM VALVES

Groove X Groove



SIZE	3"	4"	6"	8"
A	279	312	331	350
B	482	488	510	551
C	593	596	596	607
D	127	140	173	204
E	201	219	234	269
F	280	300	324	405

DIMENSIONS are approx. and in millimeters.

WET ALARM VALVES

Water Motor Gong / Model AG



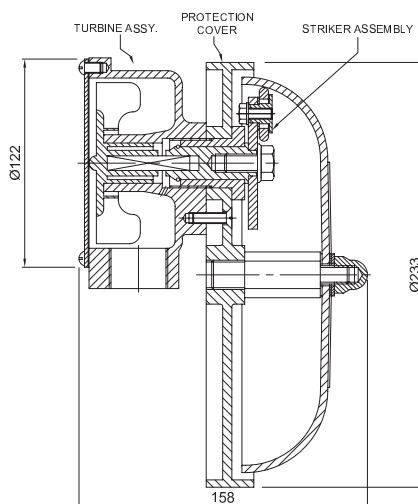
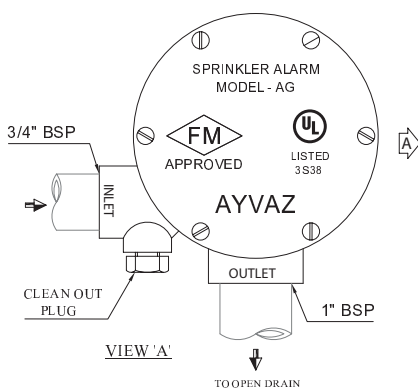
Water Working Pressure : 17.5 bar (250 PSI)

CONNECTION

Inlet : 3/4" BSPT (3/4" NPT)
Drain : 1" BSPT (1" NPT)
Gong Diameter : 205mm (8")
Gong Depth : 50mm (2")
Coating : Red Paint
Weight : 3.0 kg

SPRINKLER WATER MOTOR GONG MODEL - AG

AYVAZ Sprinkler Alarm is a hydraulically driven mechanical bell. It does sound a continuous alarm when the sprinkler system operates. The impeller and drive shaft are energy efficient, made from light weight nonmetallic material and do not require any external lubrication. The gong, protection cover and motor housing are made of corrosion resistant aluminium alloy.



Retarding Chamber / Model RC9



Water Working Pressure : 17.5 bar (250 PSI)

Material : Stainless Steel
Connection : 3/4" BSPT (F)
Weight : 2.6 kg

For use with AYVAZ Alarm Valve Model AIAV

RETARDING CHAMBER AYVAZ-RC9

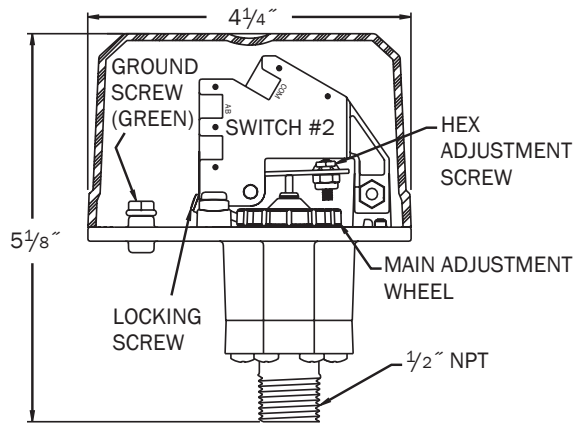
Retarding Chamber is used with Alarm Valve Trim in the system. It is a holding tank to prevent activation of the Sprinkler Alarm during water pressure surge, but permits the activation of alarm on sustained flow. The Retarding Chamber is part of UL Listed and FM Approved Alarm Valve Trim. The Retarding Chamber is made of stainless steel material and rated for 17.5 bar pressure.

ALARM PRESSURE SWITCHES

Model EPS10



EPS10 Series switches are designed for use in wet, dry, deluge and pre-action automatic sprinkler systems to indicate a discharge from a sprinkler.



Specifications

Maximum Operating Pressure : 300 psi

Maximum Adjustment

Pressure Range : 4 to 20 psi
Differential : Approximately 3 psi throughout range)
Factory Setting : Operates at rising pressure 4 to 8 psi
Switch Contact Ratings : EPS10-1: One set SPDT (Form C)
 EPS10-2: Two sets SPDT (Form C) 1 0.0 A,
 1/2 H P @ 125/250 VAC
 2.5 A @ 6/12/24 VDC

Pressure Connection

Operating Temperature Range : Indoor or outdoor use: -40°F to 160°F (-40°C to 71°C)
Cover Tamper Switch : UL Models: Optional P/N 546-8000 ULC Models: Factory Installed
Enclosure : Rated UL 4x, NEMA 4 for indoor or outdoor use

Shipping Weight : 1.2 lbs. (0,54 kg)

Service Use : Automatic Sprinkler: NFPA 13 One or Two Family Dwelling: NFPA 13D Residential Occupancies up to 4 Stories: NFPA 13RN National Fire Alarm Code: NFPA 72

Warranty : 3 years

Dimensions : 5.12" H × 3.325" W × 4.250" L
 (13.0 cm × 8.4 cm × 10.8 cm)

Manufactured by System Sensor who have the FM Approval and UL Listing



ALARM PRESSURE SWITCHES

Typical Sprinkler Applications

