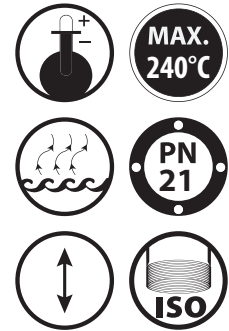
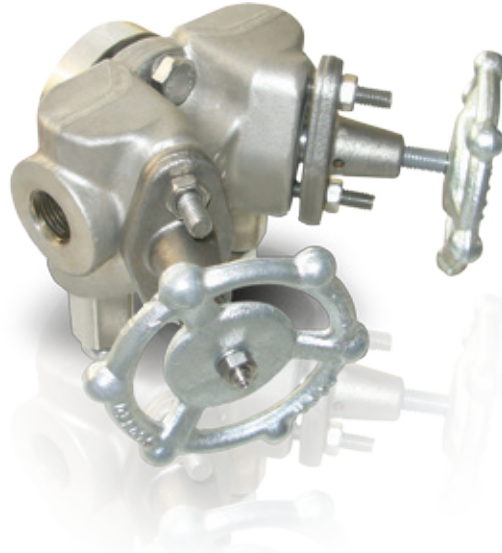


Steam Trap Valve Station

BK-33/TK (THERMOSTATIC)

Scan this QR Code



DESIGN

Product Features

Body and Cover	Stainless Steel AISI 304
Capsule	Stainless Steel
Internals	Stainless Steel
Volan	Carbon Steel
Connections	Threaded/Socket

Operating Conditions

Max. Operating Pressure (PMO)	21 bar
Max. Operating Temp. (TMO)	240°C
Differential Pressure	21 bar

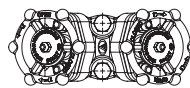
Operation

Steam saturation curve is followed with a static difference by the thermostatic element which is highly resistant against corrosion. It is aimed to discharge condensate and non-condensable gases in the steam lines. Resistant against the corrosion and not effected by water hammer. Condensate discharging is constant.

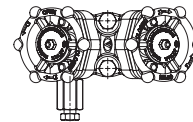
Installation

BK-33 TK, thermostatic steam trap can easily be installed to the pipe connector. Thermostatic steam traps may be installed bot vertically or horizontally to the steam lines. The flow through the pipe connector should be in the arrow direction.

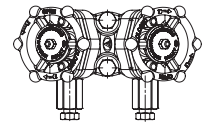
BK-33/TK



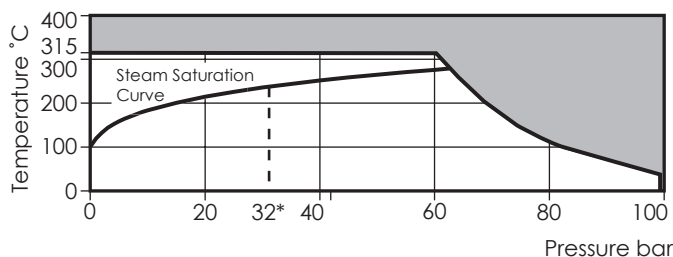
BK-43/TK



BK/53/54/TK



Pressure and Temperature Limitations

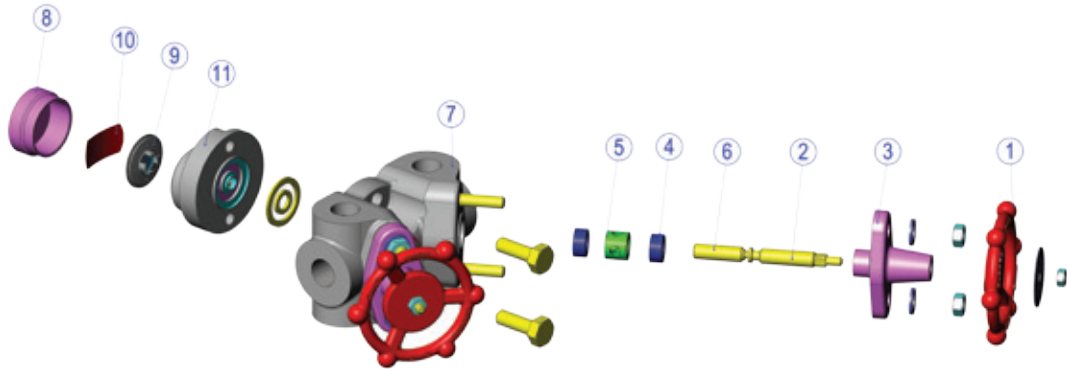


Type	Definition	Flow Direction
BK-33 TK	Pipe connector with 2 stop valves + Thermodynamic steam trap	Left to right
BK-43 TK	Pipe connector with 2 stop valves + Thermodynamic steam trap + Discharging valve	Left to right
BK-53 TK	Pipe connector with 2 stop valves + Thermodynamic steam trap + Discharging valve + Test valve	Left to right
BK-54 TK	Pipe connector with 2 stop valves + Thermodynamic steam trap + Discharging valve + Test valve	Right to left

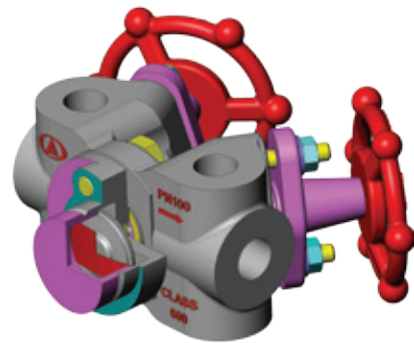
PIPELINE CONNECTORS

BK-33/TK (THERMOSTATIC)

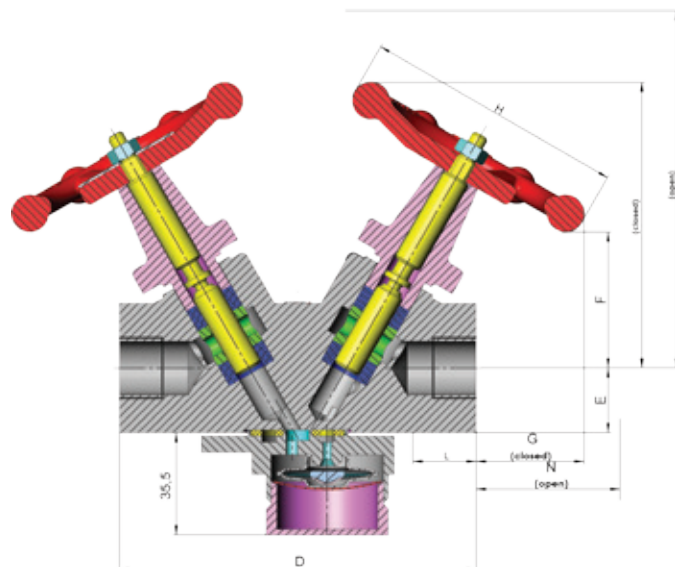
Construction



Part list		
No	Part Name	Material
1	Hand Wheel	Carbon Steel C 22.8
2	Stem-A	Stainless Steel AISI 304
3	Cover	Carbon Steel C 22.8
4	Stem Gasket	Graphite
5	Bearing	Carbon Steel St 37.2
6	Stem-B	Stainless Steel AISI 304
7	Body	Stainless Steel AISI 304L
8	Cover	Stainless Steel AISI 304
9	Capsule	Hastelloy
10	Spring	Stainless Steel AISI 304
11	Cover Body	Stainless Steel AISI 304



Dimensions



Size	BK-33 TK	BK-43 TK	BK-53 TK	BK-54 TK	THREADED									
					C (mm)	D (mm)	E (mm)	F (mm)	G (mm)	H (mm)	J (mm)	K (mm)	L (mm)	N (mm)
1/2"	703450213111	703450223111	703450233111	703450243111	36	125	25	50	35	90	99	115	22	50
3/4"	703450213112	703450223112	703450233112	703450243112	36	125	25	50	35	90	99	115	22	50

All the dimensions in the table are given in "mm".

Subject to technical alterations and deviations resulting from the manufacturing process without giving any notification.