



**VALVES**

**5**

EXPERT INDUSTRIAL  
INDUSTRY SOLUTIONS

EXPER

INDUSTRY

SOLUTIONS



# INDUSTRY SOLUTIONS FOR THE ENERGY INDUSTRY



**PISTON VALVES ► PV-16**



Body  
Cover  
Wheel  
Piston  
Connection  
Max. Working Pressure  
Max. Working Temp.

GGG 40  
GGG 40  
AISI 304 Stainless Steel + Graphite  
1.4104 Stainless Steel  
Flanged  
16 bar  
200 °C

**GLOBE VALVES ► GV-16K/25Z/40K**



Body  
Seat  
Disc  
Connection  
Max. Working Temp.  
Max. Working Pressure

**GV-16K**  
GG-25 Cast Iron  
AISI 420 Stainless Steel  
AISI 420 Stainless Steel  
Flanged  
300°C  
16 bar

**GV-25Z**  
GGG 40.3 Ductile Iron  
AISI 420 Stainless Steel  
AISI 420 Stainless Steel  
Flanged  
350°C  
25 bar

**GV-40K**  
GSC-25 Cast Steel  
13 Cr Stainless Steel  
Stainless Steel AISI 304  
Flanged  
4500°C  
40 bar

**BELLOW SEAL VALVES ► MK-16**



Body  
Seat  
Disc  
Connection  
Max. Working Temp.  
Max. Working Pressure

**MK-16**  
Grey Cast Iron  
X12Cr13  
X12Cr13  
Flanged  
200°C  
16 Bar

**MK-25**  
Nodular Cast Iron  
AISI 304 Stainless Steel  
AISI 304 Stainless Steel  
Flanged  
250°C  
25 bar

**MK-40**  
Cast Steel  
AISI 316 Stainless Steel  
AISI 316 Stainless Steel  
Flanged  
300°C  
40 Bar

**NON-RISING STEM, SOFT SEATED GATE VALVE ► GTK-18**



Body  
Cover  
Disc  
Gasket  
Connection  
Working Temperature  
Max. Working Pressure

GGG 40.3 Ductile Iron  
GGG 40.3 Ductile Iron  
Rubber Coated Casting  
NBR / EPDM  
Flanged  
110 °C  
16 Bar

**KNIFE GATE VALVE ► BV-16**



Body  
Knife  
Stem  
Seat  
Packing  
Working Temperature  
Pressure Class

GGG 40  
SS 304  
A 276 410  
EPDM  
PTFE  
-29 °C / 80 °C  
PN 16 ( DN50 - DN400 )  
PN 10 ( DN450 - DN600 )

### STAINLESS STEEL BALL VALVES ► V-2T / V-2TN



Body	AISI 304 / 316 Stainless Steel
Cover	AISI 304 / 316 Stainless Steel
Ball	AISI 304 / 316 Stainless Steel
Gasket	PTFE
Working Temperature	-25°C / 180 °C
Pressure Class	PN 25 (V-2TN) / PN 63 (V-2T)

### STAINLESS TWO PIECE BALL VALVE FLANGED ► V-2FP



Body	AISI 304 / 316 Stainless Steel
Cover	AISI 304 / 316 Stainless Steel
Ball	AISI 304 / 316 Stainless Steel
Gasket	R-PTFE
Working Temperature	-25°C / 190 °C
Pressure Class	PN40 (1/2" - 2") PN16 (2 1/2" - 4") PN16 (5" - 8")

### STAINLESS STEEL BALL VALVES ► V-3T



Body	AISI 304 / 316 Stainless Steel
Cover	AISI 304 / 316 Stainless Steel
Ball	AISI 304 / 316 Stainless Steel
Gasket	PTFE
Working Temperature	-25°C / 180 °C
Pressure Class	PN 63

### BALL VALVE WITH MOUNTING PAD ► V-3TP



Body	AISI 304 / 316 Stainless Steel
Cover	AISI 304 / 316 Stainless Steel
Ball	AISI 304 / 316 Stainless Steel
Gasket	PTFE
Working Temperature	-25°C / 180 °C
Pressure Class	PN 63

### STAINLESS STEEL BALL VALVES ► V-3F



Body	AISI 304 / 316 Stainless Steel
Cover	AISI 304 / 316 Stainless Steel
Ball	AISI 304 / 316 Stainless Steel
Gasket	PTFE
Working Temperature	-25°C / 180 °C
Pressure Class	PN 40

### BALL VALVES WITH MOUNTING PAD ► V-3FP



Body	AISI 304 / 316 Stainless Steel
Cover	AISI 304 / 316 Stainless Steel
Ball	AISI 304 / 316 Stainless Steel
Gasket	PTFE
Working Temperature	-25°C / 180 °C
Pressure Class	PN 40

**WAFER TYPE BUTTERFLY VALVES ► KV-1**



Body	GG-25 Cast Iron
Disc	AISI 316 Stainless Steel
Stem	AISI 420 Stainless Steel
Gasket	PTFE
Max. Working Temperature	110 °C
Max. Working Pressure	PN 10
Flanged Pressure	PN 16

**WAFER TYPE BUTTERFLY VALVES ► KV-3**



Body	GG-25 Cast Iron
Disc	AISI 316 Stainless Steel
Stem	AISI 420 Stainless Steel
Gasket	H-EPDM
Max. Working Temperature	130 °C
Max. Working Pressure	PN16 (DN 25-300) / PN10 (DN 350-600)
Flanged Pressure	PN 16

**LUG TYPE BUTTERFLY VALVES ► KV-4**



Body	GG-25 Cast Iron
Disc	AISI 316 Stainless Steel
Stem	AISI 420 Stainless Steel
Gasket	H-EPDM
Max. Working Temperature	130 °C
Max. Working Pressure	PN16 (DN 25-300) / PN10 (DN 350-600)
Flanged Pressure	PN 16

**WAFER TYPE BUTTERFLY VALVES ► KV-7**



Body	GG-25 Cast Iron
Disc	GGG 40.3 Ductile Iron
Stem	AISI 420 Stainless Steel
Gasket	H-EPDM
Max. Working Temperature	130 °C
Max. Working Pressure	PN16 (DN 25-300) / PN10 (DN 350-600)
Flanged Pressure	PN 16

**LUG TYPE BUTTERFLY VALVES ► KV-8**



Body	GG-25 Cast Iron
Disc	GGG 40.3 Ductile Iron
Stem	AISI 420 Stainless Steel
Gasket	H-EPDM
Max. Working Temperature	130 °C
Max. Working Pressure	PN16 (DN 25-300) / PN10 (DN 350-600)
Flanged Pressure	PN 16

**LUG TYPE BUTTERFLY VALVES FOR NATURAL GAS ► KV-9**



Body	GGG 40.3 Ductile Iron
Liner	NBR
Disc	GGG 40.3 Ductile Iron
Connection Type	Lug Type
Gasket Material	Stainless Steel 420
Max. Working Temperature	80 °C
Max. Working Pressure	PN 16 DN 25 -300 PN10 DN 350 - 600

## WAFER TYPE BUTTERFLY VALVES FOR NATURAL GAS ► KV-10



Body	GGG 40.3 Ductile Iron
Liner	NBR
Disc	GGG 40.3 Ductile Iron
Connection Type	Wafer Type
Gasket Material	Stainless Steel 420
Max. Working Temperature	80 °C
Max. Working Pressure	16 Bar

## WAFER TYPE BUTTERFLY VALVES ► KV-13



Body	GGG 40.3 Ductile Iron
Liner	AISI 316 Stainless Steel
Disc	GGG 40.3 Ductile Iron
Stem	DN 25 - DN 300 Stainless Steel 420 DN 350 - DN 600 Stainless Steel 431
Connection Type	Wafer Type
Gasket Material	EPDM
Max. Working Temperature	-10°C / 110 °C
Max. Working Pressure	PN 16

## LUG TYPE BUTTERFLY VALVES ► KV-14



Body	GGG 40.3 Ductile Iron
Disc	AISI 316 Stainless Steel
Stem	DN 40 - DN 300 Stainless Steel 420
Connection Type	Lug Type
Gasket Material	EPDM
Max. Working Temperature	-10°C / 110 °C
Max. Working Pressure	PN 16

## WAFER TYPE BUTTERFLY VALVES ► KV-17



Body	GGG 40.3 Ductile Iron
Disc	Aluminum Bronze
Stem	AISI 420 Stainless Steel
Gasket	NBR
Max. Working Temperature	90 °C
Max. Working Pressure	PN16 (DN 40-300) / PN10 (DN 350-600)
Flanged Pressure	PN 16

## LUG TYPE BUTTERFLY VALVES ► KV-18



Body	GGG 40.3 Ductile Iron
Disc	Aluminum Bronze
Stem	AISI 420 Stainless Steel
Gasket	NBR
Max. Working Temperature	90 °C
Max. Working Pressure	PN16 (DN 40-300) / PN10 (DN 350-600)
Flanged Pressure	PN 16

## LUG TYPE BUTTERFLY VALVES ► KV-20



Body	GGG 40.3 Ductile Iron
Disc	Aluminum Bronze
Stem	AISI 420 Stainless Steel
Gasket	NBR
Max. Working Temperature	80 °C
Max. Working Pressure	PN16 (DN 80-200) / PN10 (DN 250-400)
Flanged Pressure	PN 16

**BALL VALVES ► BKV-100**



Body	Bronze (CC491 K)
Stem	Brass CW602N
Ball	Brass CW617N
Seat	PTFE
Max. Working Temperature	170 °C
Pressure Class	PN 20
Connection	BSPT Threaded

**BRASS VALVES FOR WATER ► SK-120**



Body	Ni Plated Brass
Cover	Ni Plated Brass
Ball	Chrome Plated Brass
Gasket	PTFE
Connection	Threaded
Max. Working Temperature	110 °C
Pressure Class	PN 25

**SWING TYPE BRONZE CHECKVALVE ► BC-100**



Body	Bronze (CC491 K)
Disc	Bronze (CC491 K)
Max. Working Temperature	170 °C
Pressure Class	PN 20
Connection	BSPT Threaded

**SWING TYPE CHECK VALVES ► SC-600**



Body	Ms 58 Brass
Gasket	NBR
Flap Spring	Stainless Steel
Max. Working Temperature	110 °C
Pressure Class	PN 16

**GENERAL USAGE SOLENOID VALVES ► AYC4000**



Body	Brass
Seal	NBR
Working Temperature	-10 °C / 80 °C
Working Pressure	0 – 10 bar
Supply	220 V 7 AC

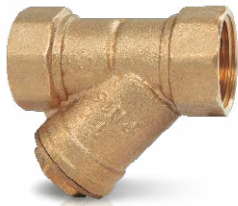
**EARTHQUAKE VALVES ► FDV-10**



Body	<b>DDV-10</b> Aluminium	<b>FDV-10</b> Aluminium
Inner Parts	Brass	Brass
Connection	Threaded	Flanged
Working Temperature	-23°C / 60 °C	-23°C / 60 °C
Working Pressure	0-0,5 Bar	0-4 Bar
Diameters	25-32-40-50	65-80-100



### STRAINERS ► BPT-100



Body	Bronze (CC491 K)
Gasket	PTFE
Filter	AISI 304 Stainless Steel
Max. Working Temperature	170 °C
Pressure Class	PN 20
Connection	BSPT Threaded

### STRAINERS ► YS-600



Body	Ni Plated Brass
Connection	Threaded
Filter	Stainless Steel
Max. Working Temperature	110 °C
Pressure Class	PN 16

### STRAINERS ► YS-800



Body	AISI 304 / 316 Stainless Steel
Cover	AISI 304 / 316 Stainless Steel
Connection	Threaded
Working Temperature	-25°C / 180 °C
Max. Working Pressure	40 Bar

### SAFETY VALVE ► EV-10



Body	Ni Plated Brass
Seat	EPDM
Adjustable Pressure	0-12 Bar
Max. Working Temperature	130 °C
Pressure Class	PN 16

### SAFETY VALVES ► L9 - LBP



Body	Bronze Casting
Seat	Brass Casting
Disc	Brass Casting
Spring	Steel
Stem	Brass
Seal	PTFE
Max. Working Temperature	-45 °C/ 185 °C
Pressure Class	PN 25

### SAFETY VALVES ► L9-LSP



Body	AISI 304 Stainless Steel
Seat	AISI 304 Stainless Steel
Disc	AISI 304 Stainless Steel
Spring	AISI 304 Stainless Steel
Stem	AISI 304 Stainless Steel
Seal	PTFE
Max. Working Temperature	-60°C / 196 °C
Pressure Class	PN 25

**FULL BORE BALL VALVE ▶ TGV-10/15**



Body	GG-25 Cast Iron
Cover	GG-25 Cast Iron
Ball	Stainless Steel
Gasket	PTFE
Connection	Flanged
Max. Working Temperature	180 °C
Max. Working Pressure	16 Bar

**FULL BORE BALL VALVE ▶ TGV-25**



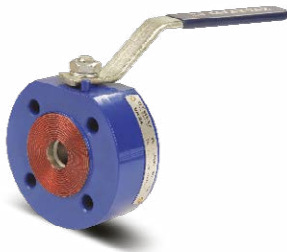
Body	GG-25 Cast Iron
Cover	GG-25 Cast Iron
Ball	Stainless Steel
Gasket	PTFE
Connection	Flanged
Max. Working Temperature	180 °C
Max. Working Pressure	10 / 16 Bar

**FULL BORE BALL VALVE ▶ TGV-30**



Body	GGG 40.3 Ductile Iron
Cover	GGG 40.3 Ductile Iron
Ball	Stainless Steel
Gasket	PTFE
Connection	Flanged
Max. Working Temperature	120 °C
Max. Working Pressure	PN16 (DN15-DN100) / PN25 (DN125-DN200)

**MONOBLOCK VALVES FOR WATER ▶ MBK-40**



Body	<b>MBK-40</b> Carbon Steel	<b>MBK-40 SS</b> AISI 316 Stainless Steel
Cover	Stainless Steel	AISI 316 Stainless Steel
Ball	1.4031 SS / 1.4086 SS	AISI 316 Stainless Steel
Connection	Flanged	Flanged
Working Temperature	-40°C / 110 °C	-40°C / 110 °C
Pressure Class	PN 40	PN 40

**-FLANGED: DN15 all sizes available in between DN100**

**MONOBLOCK VALVES FOR LIQUIDS ▶ MBK-45**



Body	GG-25 Cast Iron
Cover	Stainless Steel
Gasket	EPDM
Pressure Class	PN 16
Working Temperature	-40 / 110 °C

**MONOBLOCK VALVES FOR NATURAL GAS ▶ MBK-50**



Body	Carbon Steel
Ball	AISI 304 Stainless Steel
Connection	Flanged
Working Temperature	-40°C / 60 °C
Pressure Class	PN 40

## LIFT TYPE CHECK VALVES ► CLV-50



Body	GG-25 Cast Iron
Inner Parts	Stainless Steel
Connection	Flanged
Max. Working Temperature	300°C
Max. Working Pressure	16 Bar

## WAFER TYPE SWING CHECK VALVES ► CV-30 / 33 / 35



Body O-ring Max. Working Pressure Max. Working Temperature	<b>CV-30 (W / Spring)</b> AISI 316 Stainless Steel EPDM 16 Bar 100 °C	<b>CV-33 (W/O Spring)</b> AISI 316 Stainless Steel VITON 16 Bar 100 °C	<b>CV-35 (W/O Spring)</b> Galvanized Coated Carbon Steel EPDM 16 Bar 100 °C
---	---	--	---

## WAFER TYPE DISCO CHECK VALVES ► CV-10 / S1 / S2



Body Disc Spring Segment Max. Working Pressure Max. Working Temperature	<b>CV-10 P</b> MS58 BRASS AISI 304 Stainless Steel AISI 304 Stainless Steel AISI 304 Stainless Steel 16 Bar 250 °C	<b>CV - 10 S1</b> AISI 304 Stainless Steel Stainless Steel Stainless Steel Stainless Steel 40 Bar 300 °C	<b>CV - 10 S2</b> AISI 316 Stainless Steel Stainless Steel Stainless Steel Stainless Steel 40 Bar 300 °C
--	--	--	--

## WAFER TYPE DISCO CHECK VALVES ► CV-11 / S1 / S2



Body Disc Spring Segment Max. Working Pressure Max. Working Temperature	<b>CV-11</b> GG-25 Cast Iron GG-25 Cast Iron Stainless Steel Stainless Steel 16 Bar 250 °C	<b>CV-11 S1</b> AISI 304 Stainless Steel Stainless Steel Stainless Steel Stainless Steel 40 Bar 300 °C	<b>CV-11 S2</b> AISI 316 Stainless Steel Stainless Steel Stainless Steel Stainless Steel 40 Bar 300 °C
--	--	--	--

## DOUBLE PLATE CHECK VALVES ► CV-20/25



Body Disc Gasket Max. Working Temperature Working Pressure	<b>CV-20</b> GG-25 Cast Iron AISI 316 Stainless Steel EPDM 110 °C P16 / PN10	<b>CV-25</b> GG-25 Cast Iron GGG 40.3 Ductile Iron EPDM 110 °C P16 / PN10
	<b>P16 (DN 50-300) / PN10 (DN 350-600)</b>	

**DOUBLE ACTING PNEUMATIC ACTUATOR ► PAD-20**



Body  
Pistons  
Stem  
Sealing Elements  
Valve Connection  
Max. Working Temperature

Aluminium Extrusion  
Aluminium Cast  
Cadmium Cover Steel  
Nitril Rubber  
TStandard  
-20°C / 80 °C

**ELECTRIC ACTUATORS ► AYV-20**



Working Principle  
Protection Class  
Supply Voltage  
Return Angle  
Ambient Temperature

On - Off ( Proportional Opt.)  
IP 67  
220 V AC (Opt. 24 V DC)  
90 °± 5  
-20°C / 70 °C

**WORM GEAR ► ADR-20**



Body  
Connection Type  
Max. Working Temperature

Epoxy Coated Ductile Iron GGG 40.3  
ISO 5211  
-20°C / 70 °C

**PNEUMATIC ACTUATOR ACCESSORIES**



Body  
Indicator  
Bolt

Epoxy Coated Aluminum Injection  
Transparent Plastic  
AISI 316 Stainless Steel

**STRAINERS ► PTY-30**



Body and Cover  
Filter  
Gasket  
Max. Working Temperature  
Max. Working Pressure

GGG 40.3 Ductile Iron  
AISI 304 Stainless Steel  
Graphite  
200 °C  
16 Bar

**STRAINERS ► PTY-40**



Body  
Cover  
Filter  
Gasket  
Max. Working Temperature  
Max. Working Pressure

GGG 40  
GGG 40  
AISI 304 Stainless Steel  
Graphite  
200 °C  
16 Bar

## SEPERATORS ► SPR-16/25/40



Body Carbon Steel / Stainless Steel (Optional)  
 Internals Stainless Steel AISI 304  
 Connections Flanged  
 Condensate output 3/4"  
 Air output 1/2"

### OPERATING CONDITIONS

Max. Operating Pressure (PMO) 16/25/40 bar  
 Max. Operating Temperature (TMO) 200 °C

## AIR SEPERATOR



Body  
 Max. Working Temperature  
 Max. Working Pressure  
 Connection

### Air Seperator

St. 37 Carbon Steel  
 100 °C  
 10 bar  
 Threaded / Flanged

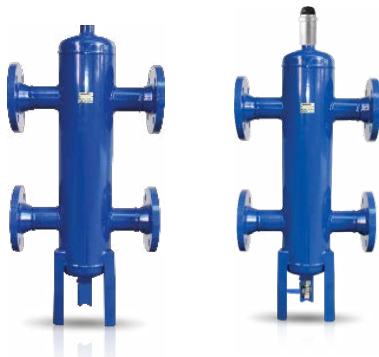
### Sediment and Dirt Seperator

St. 37 Carbon Steel  
 100 °C  
 10 bar  
 Threaded / Flanged

### Sediment, Air and Dirt Seperator

St. 37 Carbon Steel  
 100 °C  
 10 bar  
 Threaded / Flanged

## BALANCE CONTAINER



Body  
 Max. Working Temperature  
 Max. Working Pressure  
 Connection

### Balance Container

St. 37 Carbon Steel  
 100 °C  
 10 bar  
 Flanged / Welding Neck

### Package Balance Container

St. 37 Carbon Steel  
 100 °C  
 10 bar  
 Flanged / Welding Neck

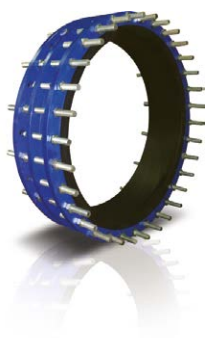
## AIR TUBE



Body  
 Max. Working Temperature  
 Max. Working Pressure  
 Connection

St. 37 Carbon Steel  
 100 °C  
 10 bar  
 Flanged

## DISMANTLING JOINT



Body  
 Pressure Range  
 Working Temperature  
 Ring

GGG-40 / 50  
 PN 10 - PN 16  
 -10°C / 80 °C  
 EPDM

PILOT OPERATED PRESSURE REDUCER ► **AGP-2000**



Body  
Main Valve, Pilot Valve, Diaphragm  
Max. Working Temperature  
Max. Working Pressure  
Adjustment  
Size

GG-25 Cast Iron  
Stainless Steel  
220 °C  
PN 25  
0,2-1,5 bar / 1-14 bar  
DN 15 - DN 150

PRESSURE REDUCING VALVES ► **BDV-25**



Body  
Shaft, Seat, Strainer  
Internals  
Connections

Ductile Iron GGG 40  
Stainless Steel AISI 304  
Stainless Steel AISI 304  
Threaded

**OPERATING CONDITIONS**

Max Inlet Pressure  
Max. Outlet Pressure  
Set Pressure

19 bar  
8,6 bar  
0,14-1,7 bar  
1,4-4,0 bar  
3,5-8,6 bar

Max. Operating Temperature

210 °C

PRESSURE REDUCING VALVES ► **GD-30**



Body  
Main Valve Seat  
Diaphragm  
Connections

Bronze Casting  
Stainless Steel  
Bronze  
Threaded

**OPERATING CONDITIONS**

Max Inlet Pressure  
Max. Outlet Pressure  
Set Pressure

17 bar (PN20)  
8,6 bar  
B Type 0,5-4 bar  
C Type 3,5-10 bar

Max. Operating Temperature

210 °C

PRESSURE REDUCING VALVES ► **BDV-246 /247**



Body  
Inner Parts  
Gasket  
Pressure Class  
Max. Inlet Pressure  
Adjustable Pressure  
Factory Settings  
Nominal Diameter

Brass  
Brass  
NBR  
PN 16  
25 Bar  
1-6 Bar  
3 Bar  
DN25 (1") - DN50 (2") BDV46  
DN15 (1/2") - DN20 (3/4") BDV247  
Threaded

Connections

## DYNAMIC BALANCE VALVES ► DBV-30



Body  
Connection  
Working Temperature  
Pressure Class  
Working Pressure Range  
Diaphragm  
Disc

Brass  
Threaded  
-20 °C / 120 °C  
PN 16  
0,5 - 3 Bar  
EPDM  
Stainless Steel

## DYNAMIC BALANCE VALVES ► DBV-40



Body  
Cartidge  
Spring  
O-ring  
Pressure Class  
Working Temperature

GG-25 Cast Iron / Carbon Steel  
AISI 304 Stainless Steel  
AISI 304 Stainless Steel  
EPDM  
PN 16  
-20 °C / 120 °C

## THREADED STATIC BALANCE VALVES ► BSBV-100



Body  
Cover  
Disk  
Disk Surface  
Stem  
Gasket  
Max. Temperature  
Max. Pressure

Bronze  
Brass  
Brass  
PTFE  
Bass  
EPDM  
120 °C  
25 Bar

## FLANGED STATIC BALANCE VALVES ► BSBV-200



Body  
Cover  
Disk  
Stem  
Gasket  
Max. Temperature  
Max. Pressure

GG-25 Cast Iron  
GG-25 Cast Iron  
Composite  
Brass  
EPDM  
120 °C  
16 Bar

**HEAD OFFICE**

Atatürk Sanayi Bölgesi  
Mustafa İnan Caddesi No: 44 Arnavutköy - İSTANBUL  
Tel : +90 212 771 01 45 (pbx) | info@ayvaz.com

**MAIN FACTORY**

Hadımköy Mahallesi  
Tel : +90 212 771 47 27 | Fax: +90 212 771 47 27  
www.ayvaz.com



Cona  
Caserta / Italy

Tel : +39 0823 187 3988  
rmolaro@ayvaz.com



Ayvaz Ukraine  
Kiev / Ukraine

Tel : +380 44 390 57 57  
info@ayvaz.com.ua



Tricorr  
Warsaw / Poland

Tel : +48-32-783-295-1  
tricorr@tricorr.eu



Ayvaz Germany  
Viernheim / Germany

Tel : +49 62046014399  
germany@ayvaz.com



Ayvaz Serbia  
Belgrade / Serbia

Tel : +381 61 658 70 52  
yakbiyik@ayvaz.com



Ayvaz Azerbaijan  
Baku / Azerbaijan

Tel : +99(455)579-84-32  
ahayatov@ayvaz.com



Ayvaz Kazakhstan LLP  
Almaty / Kazakhstan

Tel : +7 (727) 327 97 57  
www.ayvaz.kz



Ayvaz N  
Ispirih / Bulgaria

Tel : +359 8431 27 32  
office@ayvaz-n.eu



Ayvaz Vietnam  
HCMC / Vietnam

Tel : +84 89 8508345  
ggursoy@ayvaz.com



Ayvaz China  
Ningbo / China

Tel : +86 152 5830 7361  
msahin@ayvaz.com



Ayvaz Egypt  
Cairo / Egypt

Tel : +20 122 819 78 29  
andrew.eid@ayvaz.com



Ayvaz Gulf  
Dubai / U.A.E.

Tel : +971 563550822  
+971 501306871  
mideast@ayvaz.com



Ayvaz Americas  
Rhode Island

Tel : +1 401 737 8380  
americas@ayvaz.com